

**C O D I C O**

**CODICO GmbH**  
 Zwingenstraße 6-8, 2380 Perchtoldsdorf, Austria  
 Telefon: +43 1 86 305-0, Fax: +43 1 86 305-5000  
 e-mail: office@codico.com, www.codico.com  
 FN 436940i, Landesgericht Wr. Neustadt

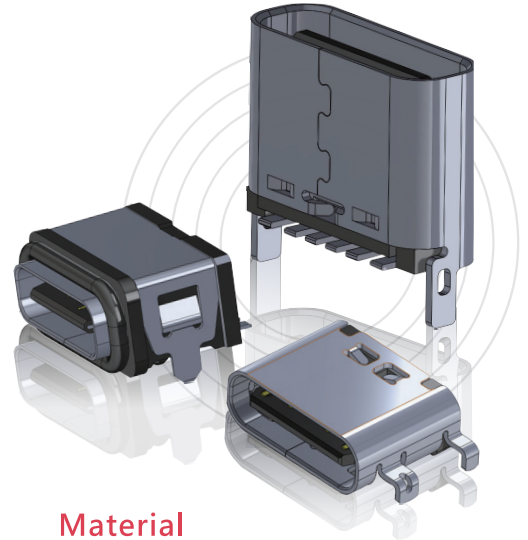
Zertifiziert nach ISO 9001:2015

# Type C Charging Connector

**5A**  
High current  
charging

**SMT**  
6pin Vertical  
type

**>10000**  
Mating Cycle



## Features

A one-stop interconnection solution that can satisfy data, power and A/V at the same time.

The interface adopts reversible design.

Support USB 2.0, USB 3.1 Gen 1 and USB 3.1 Gen 2 and other types.

Up to 100W at 20V.

Easily backward compatible with other USB connectors using conversion cables or adapters.

## Application

- It can be widely used in the charging connection base of household appliances.
- Charging dock that can be used for rechargeable children's toys.
- It can be widely used in the general charging of products in the low-end application market, and has patent protection.



## Material

1. Housing: LCP, Glass Fiber Filled Black, UL-94V-0

2. Contact Terminal: Copper Alloy

3. Shell: Stainless steel

## Electrical

1. A current of 5.0 A shall be applied collectively to VBUS pins (pins A4, A9, B4, and B9)

2. 1.25 A applied to the VCONN pin (pins B5 of the plug connector) with the return path through the corresponding GND pins (pins A1, A12, B1, and B12).

3. A minimum current of 0.25 A shall also be applied individually to all the other contacts.

4. Contact Resistance: 40mΩ Max (Initial), 50mΩ Max (After Test)

5. Insulation resistance: 100MΩ Min  
 Dielectric withstanding voltage: 100V AC for 1 minute between adjacent terminal, no breakdown

## Mechanical

Durability: 10,000 Cycles

Mating Force: 5 to 20N

Unmating Force: 8 to 20N after testing

## Environmental and Processing

Operating Temperature: -40°C to +80°C  
 Solder Temperature: Peak temp 255°C (+5/-0°C) Maximum (5 seconds above 250°C)

Since 1990

Proactive  
Innovation  
Efficiency

**CviLux Group**  
www.cvilux.com

9F, No.9, Ln. 3, Sec. 1, Zhongzheng E. Rd., Tamsui Dist., New Taipei City

TEL: +886 2 2620-1000

