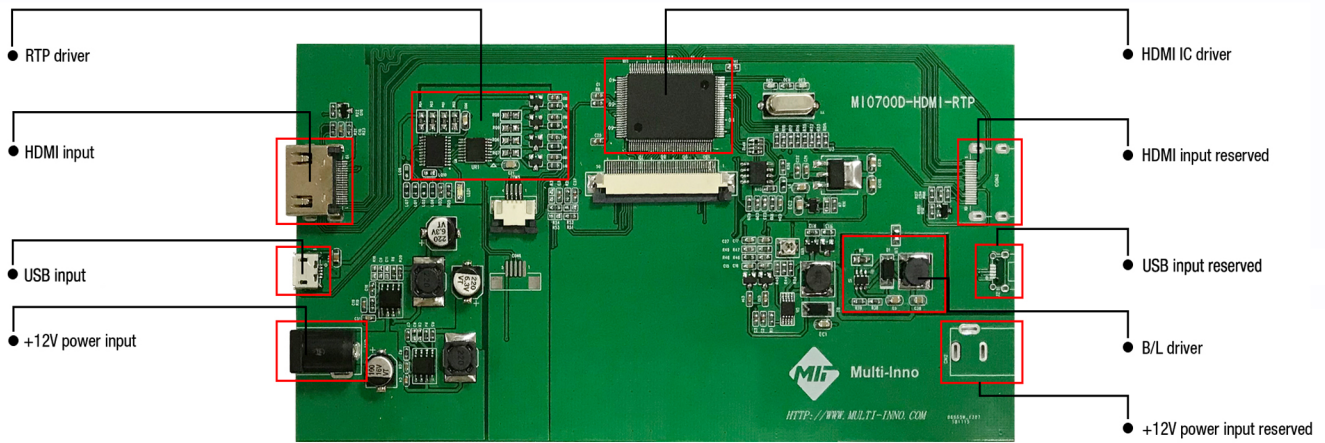




HDMI FUNCTION BOARD



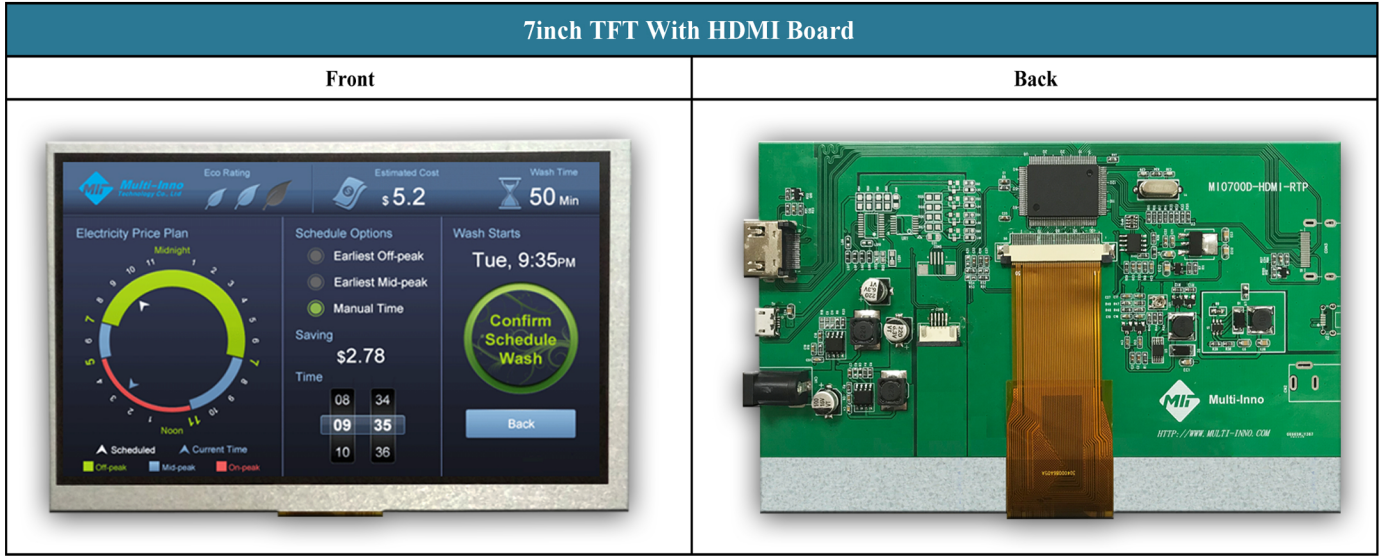
- * Standard High Definition Multimedia Interface (HDMI) input;
- * USB-HID driver recognition with both Capacitive and Resistive touch options;
- * Compatible with Windows/Linux as well as SBCs such as RaspberryPi and BeagleBone;
- * With/without four Φ 3.5mm mounting holes built into the module - enabling standard Φ 3 or #6-32 screws;
- * Standard, Premium, and Sunlight Readable TFT display variations;
- * 12V single power supply.

• Availability

Controller	Size Inch	P/N	Resolution	A.A. (mm)	Outline Size (mm)	Contrast (Cr)	Brightness (nits)	Top. (°C)	Tstor. (°C)	Interface	TP (Selectable)	Viewing Direction
RTD2660H	7.00	MI0700S6T-1CP2-HB	800xRGBx480	154.08x85.92	164.90x99.80x18.90	500	340	-20-70	-30-80	HDMI / USB input	● RTP ● CTP	12:00
		MI0700S6T-6CP-HB	800xRGBx480	154.08x85.92	181.60x100.60x20.20	500	340	-20-70	-30-80	HDMI / USB input	● RTP ● CTP	12:00
		MI0700AXT-6-HB	1024xRGBx600	154.21x85.92	164.90x100.00x15.60	800	400	-20-70	-30-80	HDMI / USB input	● RTP ● CTP	Free



• Photo Show



• Design Example

164.9±0.3(LCM O.D.) 0.04
164.4(COVER O.D.)
155.08(LCD V.A / COVER V.A) 6.41
154.08(LCD A.A) 6.91
(80.99)
4.14
4.68
99.52(COVER O.D.)
86.52(LCD V.A / COVER V.A)
85.52(LCD A.A)
7" TFT
800(H)x480(V)
VIEWING DIRECTION

INK ON REAR SIDE OF COVER
COLOR: PANTONE BLACK C

18.9±1.0(TOTAL)
7.5±0.5(TFT+CTP)
164.8±0.5
68.1±0.5
49.1±0.5
-20.1±0.5
CON4: HDMI INPUT
CTP INPUT(RESERVED)
RTP INPUT(RESERVED)
COMPONENT AREA
CN1: +12V INPUT
J1: USB INPUT
1.0(MIN.)
14.2±0.5
-0.4
60.9±0.5

NO.	SYMBOL
1	TMDS DATA 2+
2	TMDS DATA 2- SHIELD
3	TMDS DATA 2-
4	TMDS DATA 1+
5	TMDS DATA 1- SHIELD
6	TMDS DATA 1-
7	TMDS DATA 0+
8	TMDS DATA 0- SHIELD
9	TMDS DATA 0-
10	TMDS CLOCK+
11	TMDS CLOCK- SHIELD
12	TMDS CLOCK-
13	CEC
14	RESERVED(L.C. ON DEVICE)
15	SCL
16	SDA
17	IOCC/CEC GROUND
18	+5V POWER
19	HOT PLUG DETECT

NO.	SYMBOL
1	+5V
2	D-
3	D+
4	NC
5	GND

NOTES FOR TFT:

1. DISPLAY TYPE: TFT/TRANSMISSIVE/NORMALLY WHITE.
2. POWER SUPPLY(CN1): VDD=12.0V(TYP.).
3. VIEWING DIRECTION: 12 O'CLOCK.
4. DRIVER IC: RTD2660H.
5. INTERFACE: HDMI AND USB INPUT.
6. OPERATING TEMP.: -20~70°.
7. STORAGE TEMP.: -30~80°.
8. LED BACKLIGHT: WHITE LED.
9. SURFACE LUMINANCE: 34000/AP WITH CTP(TYP.).
10. TREATMENT OF TOP SURFACE: ANTI-GLARE.

NOTES FOR CTP:

1. PROJECTIVE CAPACITIVE TOUCH PANEL.
2. OPERATING VOLTAGE: VCC=3.3V.
3. COVER GLASS + SENSOR GLASS + FFCA.
4. IC DRIVER: IL02511, USB INTERFACE.
5. MULTI FINGER: UP TO 5.
6. HARDNESS OF COVER SURFACE: 6H.

OTHERS:

1. GENERAL TOLERANCE: ±0.3mm.
2. RIGHS COMPLIANT.

MULTI-INNO TECHNOLOGY CO.,LTD.

DRAWN BY: RITA 2019.03.21 SCALE : 1/1 MODULE P/N:
CHECKED BY: UNIT: mm MI0700S6T-1CP2-HB
APPROVED BY: DESCRIPTION:
TFT + CTP + IRON FRAME
+ PCB MODULE

01 FIRST ISSUE
VER. REVISED DESCRIPTION REA. DATE 2019.03.21
REVISER DATE VERSION NO: 01

