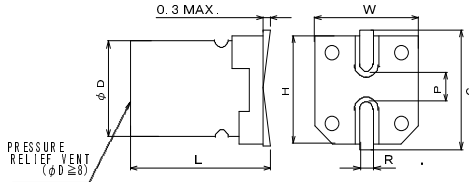




■ Specification

Items		Specifications				
Rated voltage (V)		25	35	50	63	80
Surge voltage (V)		32	44	63	79	100
Category temperature range (°C)		-55 to +125				
Capacitance tolerance (%)		±20				
Leakage current(LC) (μA MAX/after 2min)	≤ 63V	The greater value of either 0.01CV or 3				
	80V ≤	The greater value of either 0.05CV or 100				
Tangent of loss angle(DF) (MAX) 120Hz/20°C		0.14	0.12	0.10	0.08	0.08
Temperature characteristics	Z-55°C/Z20°C	1 to 2.5				
Impedance ratio at 120Hz	Z125°C/Z20°C	0.6 to 1.0				
125°C rated voltage applied (Applied ripple current)	Test	4,000hrs				
	Δ C/C	Within ±30% of the initial value				
	tanδ	≤ 2 times the initial specified value				
	ESR	≤ 2 times the initial specified value				
	LC	≤ The initial specified value				

■ Dimensions (mm)



D +0.5MAX.	L ±0.3	W ±0.2	H ±0.2	C ±0.2	R	P ±0.2
6.3	6.0	6.6	6.6	7.3	0.5 ~ 0.8	2.2
6.3	7.7	6.6	6.6	7.3	0.5 ~ 0.8	2.2
8	10.5	8.3	8.3	9.0	0.7 ~ 1.0	3.2
10	10.5	10.3	10.3	11.0	1.0 ~ 1.4	4.6
10	12.5	10.3	10.3	11.0	1.0 ~ 1.4	4.6

■ Size list (mm)

ESR [mΩ MAX./100kHz, 20°C] Rated ripple current [mA rms/100kHz, 125°C]

V μF	25			35			50			63			80		
	SIZE (D×L)	ESR	RIPPLE CURRENT	SIZE (D×L)	ESR	RIPPLE CURRENT	SIZE (D×L)	ESR	RIPPLE CURRENT	SIZE (D×L)	ESR	RIPPLE CURRENT	SIZE (D×L)	ESR	RIPPLE CURRENT
10										6.3×6.0	120	700			
15										6.3×7.7	80	900			
22							6.3×6.0	80	750				8×10.5	45	1030
33							6.3×7.7	40	1100	8×10.5	40	1100	10×10.5	36	1270
39													10×12.5	32	1360
47				6.3×6.0	60	900									
56	6.3×6.0	50	900							10×10.5	30	1400			
68				6.3×7.7	35	1400	8×10.5	30	1250	10×12.5	22	1650			
100	6.3×7.7	30	1400												
120							10×10.5	28	1600						
150				8×10.5	27	1600	10×12.5	19	1820						
220	8×10.5	27	1600												
270				10×10.5	20	2000									
330	10×10.5	20	2000	10×12.5	17	2260									
470	10×12.5	16	2260												

■ Model No.

