

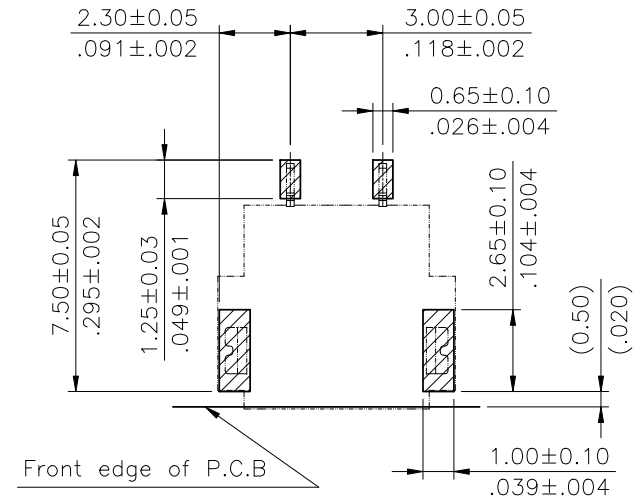
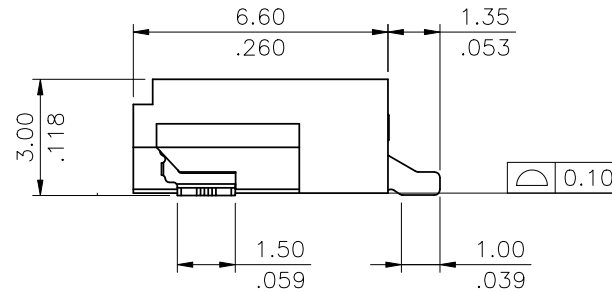
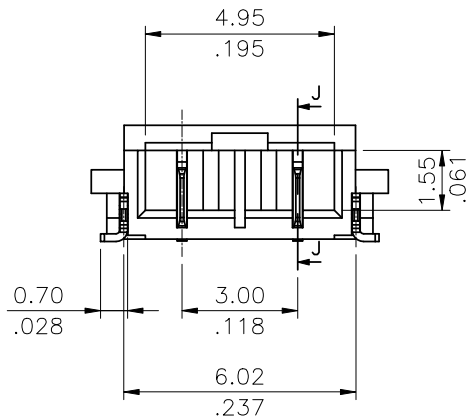
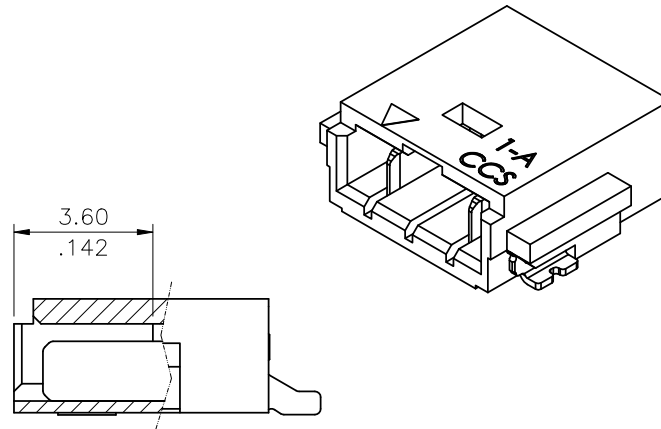
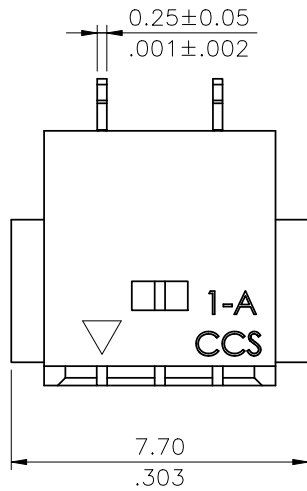
Material :

- * Base:
High Temperature Plastic UL 94V-0
Color Nature (Halogen-Free)
- * Contact : Copper Alloy
- * Tab : Copper Alloy, With matte Tin plated

Ordering Code:

$\frac{CIL3}{①} \frac{03}{②} \frac{M}{③} \frac{1}{④} \frac{P}{⑤} \frac{R}{⑥} \frac{1}{⑦} \frac{-NH}{⑧}$

- ① Series No.
- ② No. of Circuits: 03 Pin
- ③ M= SMT Type
- ④ Plating: 1= Matte Tin plated over Nickel
- ⑤ Type: P= Plug
- ⑥ Packing Options: R= Tape & Reel packing
- ⑦ Option: 1= Omitted pin No.2
- ⑧ Other option:
-NH= For Lead Free IR Processes and Halogen-Free



Recommended P.C.B Layout

*** Please contact Barbara.Maier@codico.com to get more information! ***

Halogen-Free

Lead Free Process

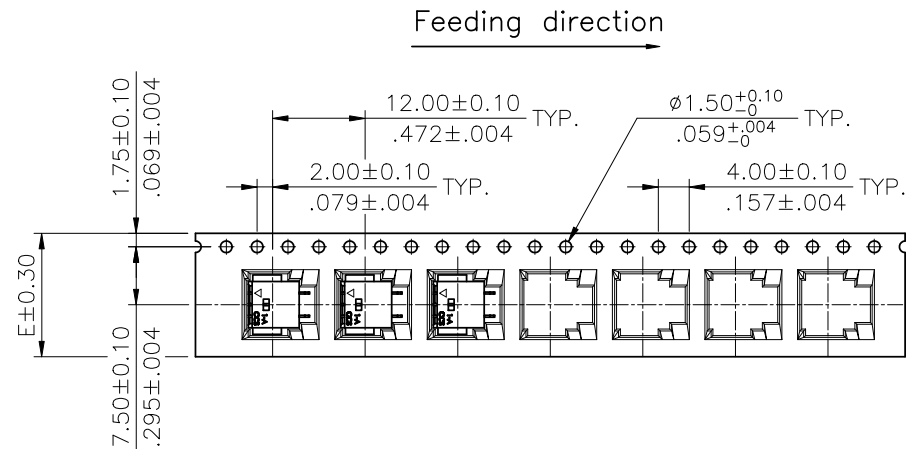
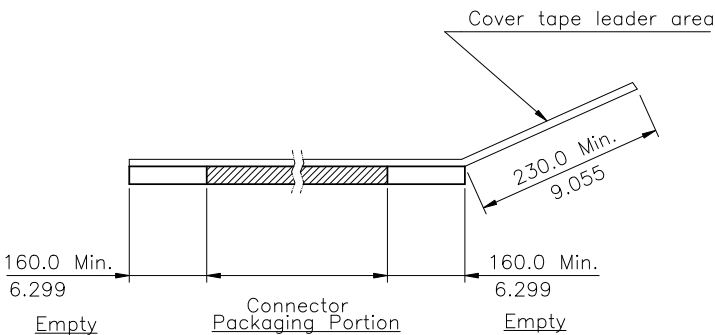
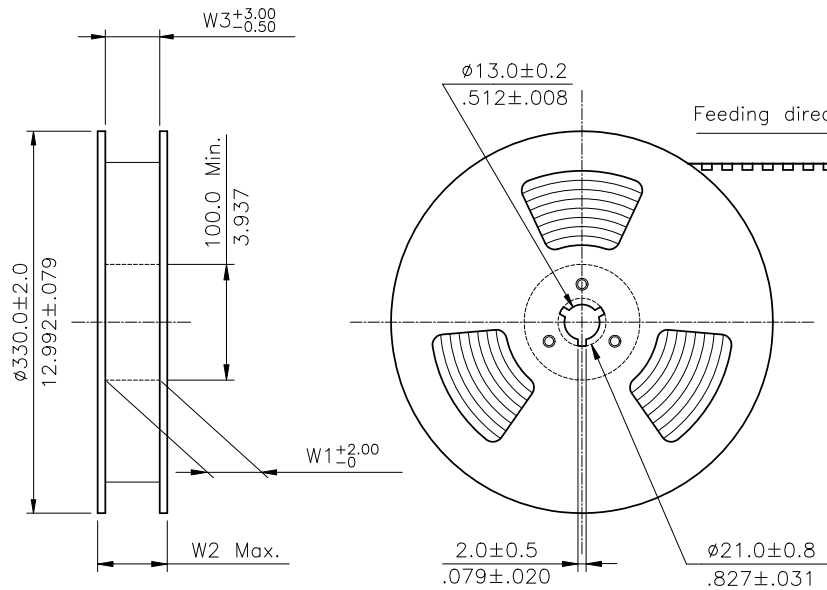
RoHS Compliant

④					DATE	UNIT: mm / inch	TITLE:
③					06/17-13	TOLERANCE UNLESS OTHERWISE SPECIFIED	MATERIAL:
②					06/17-13	.X ± 0.30/.012 X' ± r	
①					06/17-13	.XX ± 0.20/.008 .X' ±	
SYM	NAME	DATE	REVISIONS	APPROVED BY:	06/17-13	.XXX ± 0.10/.004 .XX' ±	FINISH:

CVILUX CORP.
2013.06.17
ISSUED

 瀚荃股份有限公司
CviLux Corporation

DRAWING NO.	CIL301S1	PART NO.	CIL303M1PR1-NH
SCALE	5 / 1	SHEET	1 OF 2



WIDTH : 16 mm Carrier

NOTE :

- * Reel Material : Corrugated Paper
- * Carrier Material : Black, Conductive Polystyrene Alloy
- * Cover Tape Material : Polyester
- * Cover Tape Peel Strength : 0.1N – 1.3N
- * Carrier camber is within 1mm in 100mm
- * All dimensions meet EIA-481-2 & EIA-481-3 requirements.
- * Quantity : 1600 PCS/Reel

Circuits	Dimension					Packing (Reel/Caton)
	E	F	W1	W2	W3	
03	16.0(.630)	--	16.5(.650)	22.5(.886)	16.5(.650)	11

RoHS Compliant

4					DATE	UNIT: mm / inch	TITLE:	瀚荃股份有限公司 CviLux Corporation
3			DRAWN BY: Clark		06/17-13	TOLERANCE UNLESS OTHERWISE SPECIFIED	MATERIAL:	
2			ENGINEER: Clark		06/17-13	.X ± 0.30/.012 X' ± r	FINISH:	
1			CHECKED BY: David		06/17-13	.XX ± 0.20/.008 .X' ±	DRAWING NO. CIL301S1 PART NO. CIL303M1PR1-NH	
SYM	NAME	DATE	APPROVED BY: David		06/17-13	.XXX ± 0.10/.004 .XX' ±	SCALE	