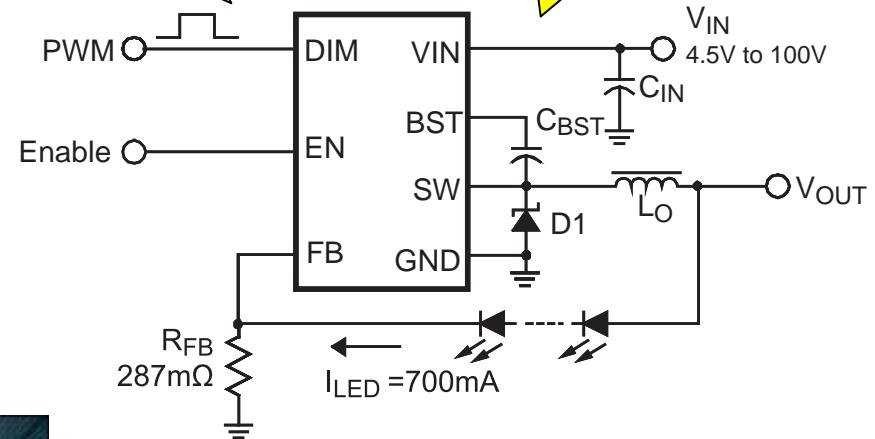


Up to 20kHz
PWM Freq

100V Max Input

What is it?

The MP4689 is a 1A, **100V** input-voltage buck WLED driver for HB LED lighting applications. MPS' proprietary Adaptive Hysteresis Current Mode Control Scheme delivers accurate LED current regulation and requires minimal external components. Available in a SOIC8E package.



Only 5 external components!

Applications

- Street Lights
- Automotive Lighting
- General Illumination
- Constant Current Source



http://mpsweb/mktg&sales_abd.html

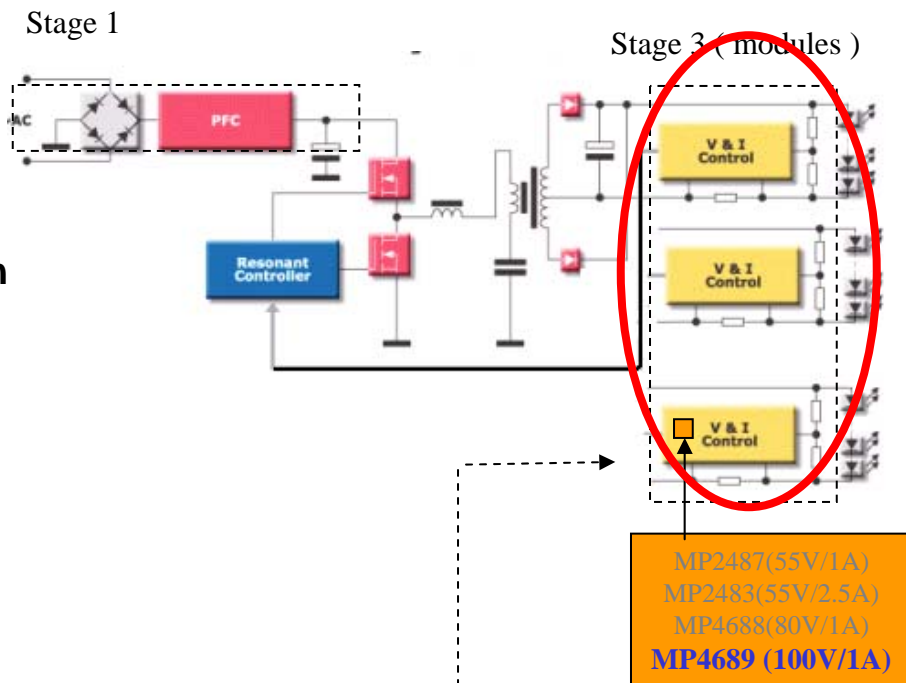
Features

- Wide 4.5V to 100V Operating Input Range
- No Output Capacitor or Compensation Required
- Up to 95% Efficiency
- $\pm 3\%$, 200mV Reference Accuracy
- Adaptive Hysteretic for Accurate Line Regulation
- Up to 1MHz Switching Frequency
- Up to 20kHz Dimming Frequency
- Dedicated PWM Dimming Control Input
- Available in SOIC8 with Exposed Pad Package

Benefits

- 100V High Input Voltage \rightarrow max. # of LEDs/string, fewer V&I modules (see yellow blocks)
- Proprietary Adaptive Hysteretic \rightarrow better line regulation and minimal ext. components.
- Hysteretic control provides very fast response \rightarrow up to 20kHz Dimming Freq.

Street Lamp Power Architecture -- 3 stage solution



Block Diagram

