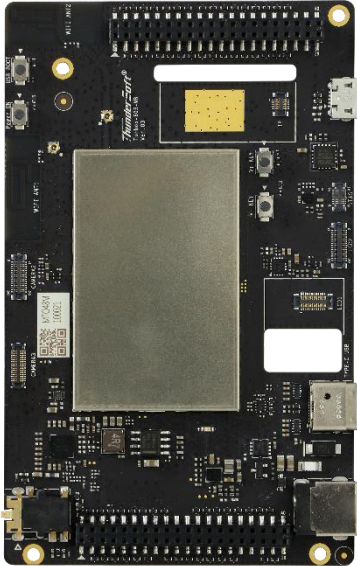


# TurboX S605 SBC Spec



Category	Description
Platform	Qualcomm® RedDragon™ QCS605 8x Qualcomm® Kryo™ 300 CPU, Up to 2.5 GHz Qualcomm® Adreno™ 615, OpenGL® ES 3.2, Vulkan, OpenCL Qualcomm® Hexagon™ 685 DSP
Memory and Storage	LPDDR4x 6GB + eMMC 64GB
Display	2x MIPI-DSI 4-lane, Up to 2560 × 1600 10 bit at 60 Hz DisplayPort 1.4+ data concurrency over USB
Camera	2x ISP 14 bit + 1x Lite ISP: 32 MP (2x ISP, 16 + 16 MP), 3x MIPI-CSI 4-lane, 2x ISP 14 bit + 1x Lite ISP, up to 32MP
Decode	4K60 10-bit: HEVC/VP9/H.264 HDR 10
Encode	4K60 8-bit: HEVC/H.264 + 1080P60
WIF/BT	802.11a/b/g/n/ac 2.4/5Ghz 2×2 MIMO & Bluetooth 5.0
Interface	1 x USB 3.1 Type C; 1 x USB 2.0 Micro B; 1 x MicroSD card slot; 3 x Camera Connector; 2 x LCD Connector; 1 x Touch Panel Connector; 1x JATG Debug; 1x 3.5mm headset; 1 x 40 Pin Expansion Connector(SPI, LPI_SPI, I2S, I2C, UART, GPIO) 1 x 40 Pin Audio Connector(DMIC, AMIC, SPEAKER, LINE, GPIO)
Power	+12V/3A input
Operating Temperature	-20°C ~ 70°C
Relative Humidity	5%~95%, non-condensing
Dimension	106mm*66mm
OS Support	Android 8.1