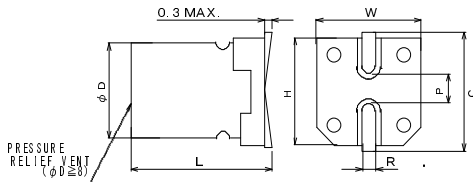




■ Specification

Items		Specifications				
Rated voltage (V)		25	35	50	63	80
Surge voltage (V)		32	44	63	79	100
Category temperature range (°C)		-55 to +105				
Capacitance tolerance (%)		±20				
Leakage current(LC) (μA MAX/after 2min)	≤ 63V	The greater value of either 0.01CV or 3				
	80V ≤	The greater value of either 0.05CV or 100				
Tangent of loss angle(DF) (MAX)	120Hz/20°C	0.14	0.12	0.10	0.08	0.08
Temperature characteristics	Z-55°C/Z20°C	1 to 2.5				
Impedance ratio at 120Hz	Z125°C/Z20°C	0.6 to 1.0				
105°C rated voltage applied (Applied ripple current)	Test	10,000hrs				
	Δ C/C	Within ±30% of the initial value				
	tanδ	≤ 2 times the initial specified value				
	ESR	≤ 2 times the initial specified value				
	LC	≤ The initial specified value				

■ Dimensions (mm)



D +0.5MAX.	L ±0.3	W ±0.2	H ±0.2	C ±0.2	R	P ±0.2
6.3	6.0	6.6	6.6	7.3	0.5 ~ 0.8	2.2
6.3	7.7	6.6	6.6	7.3	0.5 ~ 0.8	2.2
8	10.5	8.3	8.3	9.0	0.7 ~ 1.0	3.2
10	10.5	10.3	10.3	11.0	1.0 ~ 1.4	4.6
10	12.5	10.3	10.3	11.0	1.0 ~ 1.4	4.6

■ Size list (mm)

ESR [mΩ MAX./100kHz, 20°C] Rated ripple current [mA rms/100kHz, 105°C]

V μF	25			35			50			63			80		
	SIZE (D×L)	ESR	RIPPLE CURRENT	SIZE (D×L)	ESR	RIPPLE CURRENT	SIZE (D×L)	ESR	RIPPLE CURRENT	SIZE (D×L)	ESR	RIPPLE CURRENT	SIZE (D×L)	ESR	RIPPLE CURRENT
10										6.3×6.0	120	1000			
15										6.3×7.7	80	1500			
22							6.3×6.0	80	1100				8×10.5	45	1550
33							6.3×7.7	40	1600	8×10.5	40	1700	10×10.5	36	1700
39													10×12.5	32	1800
47				6.3×6.0	60	1300									
56	6.3×6.0	50	1300							10×10.5	30	1800			
68				6.3×7.7	35	2000	8×10.5	30	1800	10×12.5	22	2100			
100	6.3×7.7	30	2000												
120							10×10.5	28	2000						
150				8×10.5	27	2300	10×12.5	19	2300						
220	8×10.5	27	2300												
270				10×10.5	20	2500									
330	10×10.5	20	2500	10×12.5	17	2800									
470	10×12.5	16	2800												

■ Model No.

