

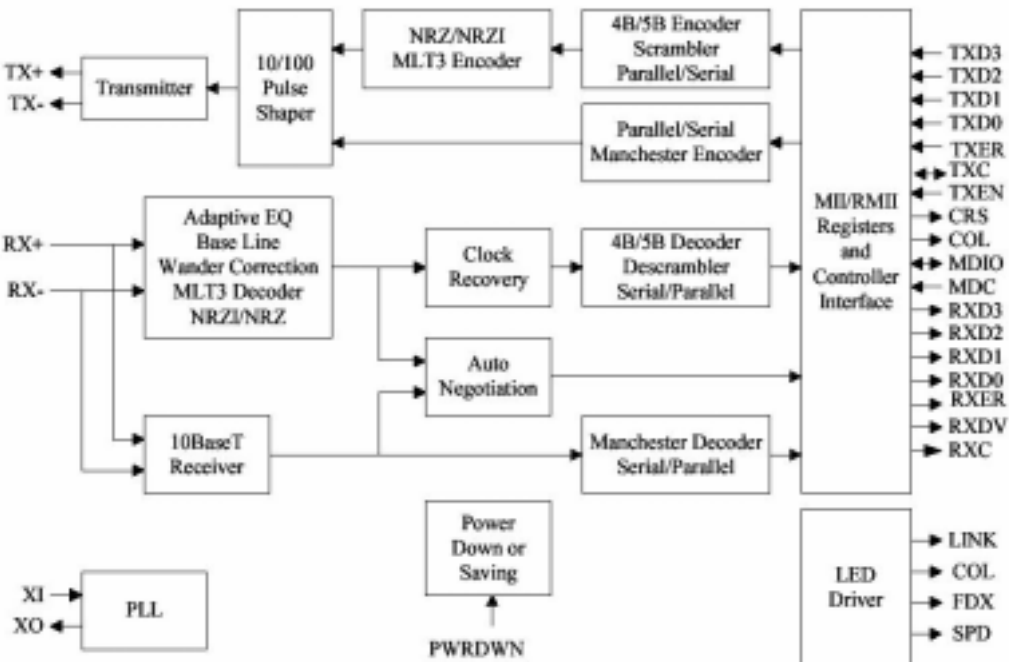


The Infinite Bandwidth Company™

10/100 Single Port PHY Devices

- KS8721B/BT/BL/SL -

KS8721B/BT Single-Channel PHY



Features:

- 10BaseT, 100BaseTX, 100BaseFX
- MII / RMII Interface
- Low power dissipation (80mA) 200mW
- Configuration through MDC/MDIO port or via strapping
- 48 pin SSOP & **48-TQFP** (KS8721BT)
- Auto – MDI/MDI-X (Auto-Crossover)
- Single **2.5V** supply

Applications

- Embedded apps, e.g. network printer
- Broadband Gateway, router
- Wireless LAN Access Point
- IP Phone, Game Console, Set Top box
- Media Converter
- LAN on motherboard (LOM)

Now Available in 48-TQFP



KS8721B
48-SSOP

10mm x 16mm

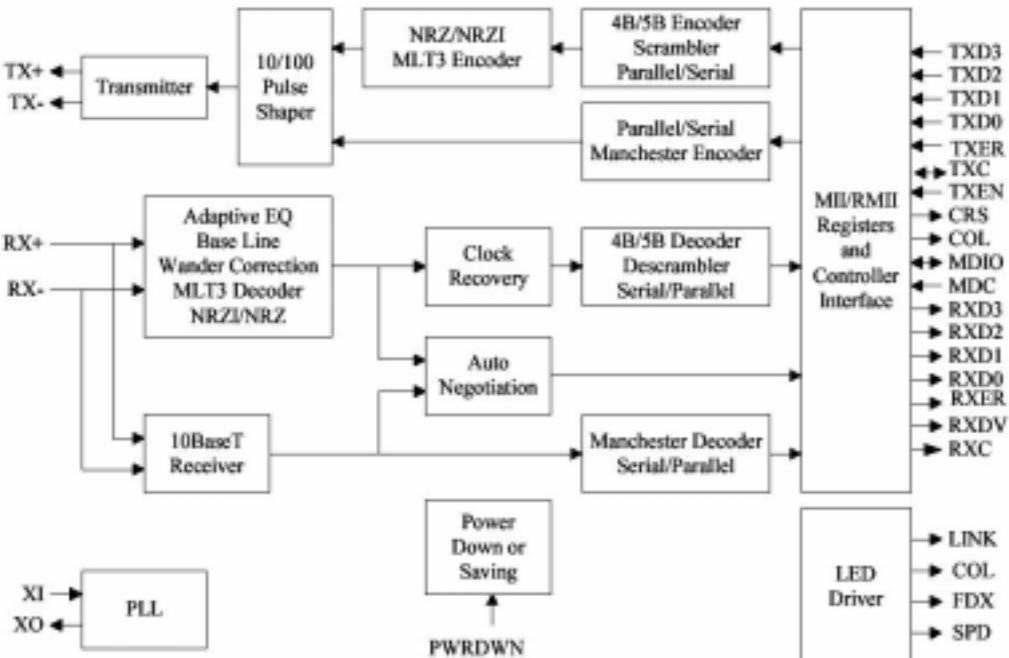


KS8721BT
48-TQFP

7mm x 7mm

KS8721BL Single-Channel PHY

3.3V Supply



Features:

- ➔ 10BaseT, 100BaseTX, 100BaseFX
- ➔ MII / RMII Interface
- ➔ Low power dissipation
- ➔ Configuration through MDC/MDIO port or via strapping
- ➔ MIC5255 + KS8721B in one package
- ➔ **48-LQFP** – Same footprint as KS8721BT
- ➔ Auto – MDI/MDI-X (Auto-Crossover)
- ➔ **Single 3.3V Supply**

Applications

- ➔ Embedded apps, e.g. network printer
- ➔ Broadband Gateway, router
- ➔ Wireless LAN Access Point
- ➔ IP Phone, Game Console, Set Top box
- ➔ Media Converter
- ➔ LAN on motherboard (LOM)

Same footprint as KS8721BT



KS8721B
48-SSOP

10mm x 16mm



KS8721BT
48-TQFP

7mm x 7mm

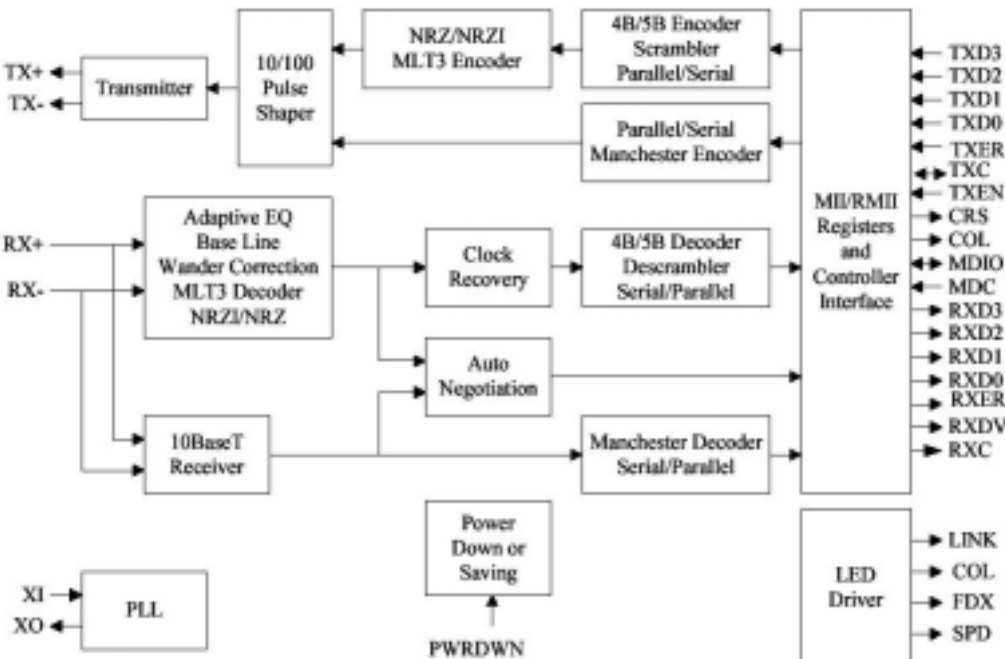


KS8721BL
48-LQFP

7mm x 7mm

KS8721SL Single-Channel PHY

3.3V Supply



Features:

- 10BaseT, 100BaseTX, 100BaseFX
- MII / RMII Interface
- Low power dissipation (80mA) 200mW
- Configuration through MDC/MDIO port or via strapping
- MIC5255 + KS8721B in one package
- 48 pin SSOP
- Auto – MDI/MDI-X (Auto-Crossover)
- **Single 3.3V supply**

Drop-in replacement for KS8721B



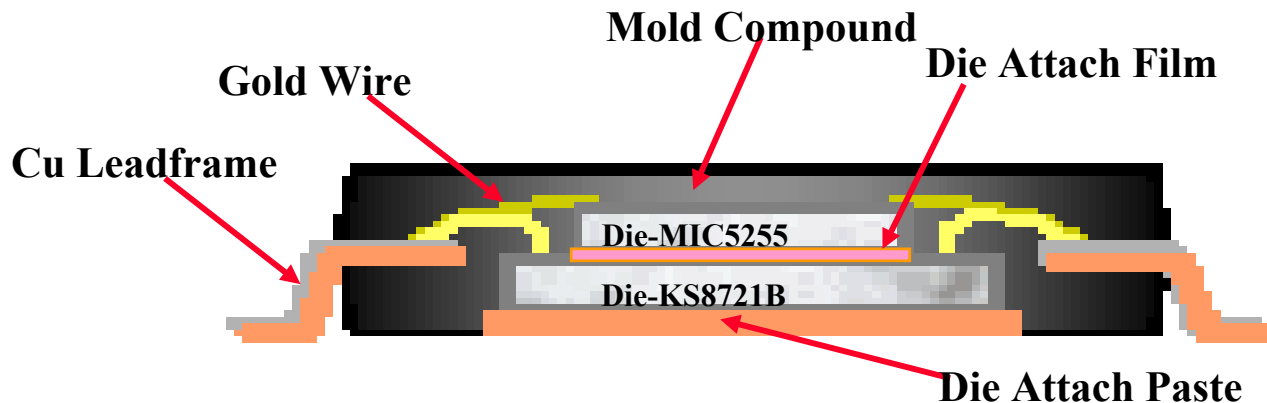
KS8721SL
48-SSOP

10mm x 16mm

Applications

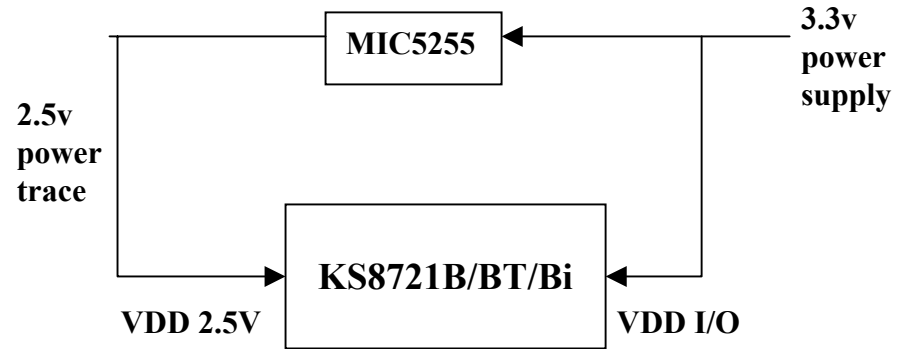
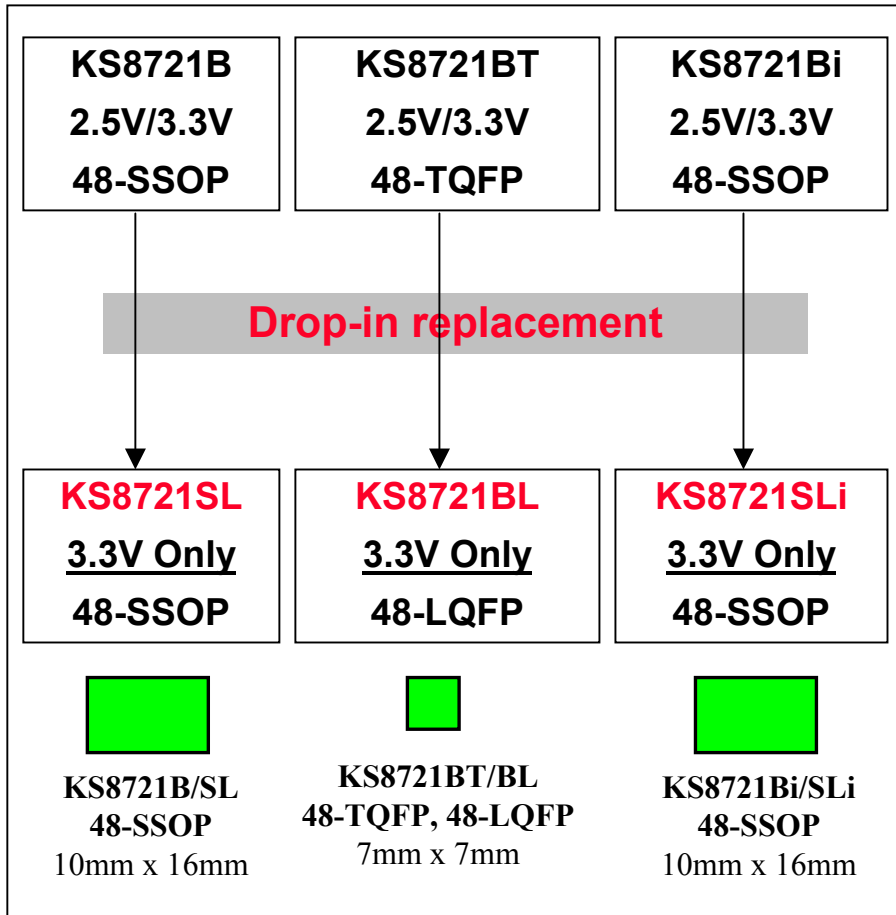
- Embedded apps, e.g. network printer
- Broadband Gateway, router
- Wireless LAN Access Point
- IP Phone, Game Console, Set Top box
- Media Converter
- LAN on motherboard (LOM)

KS8721BL - 2chip Stacked CSP

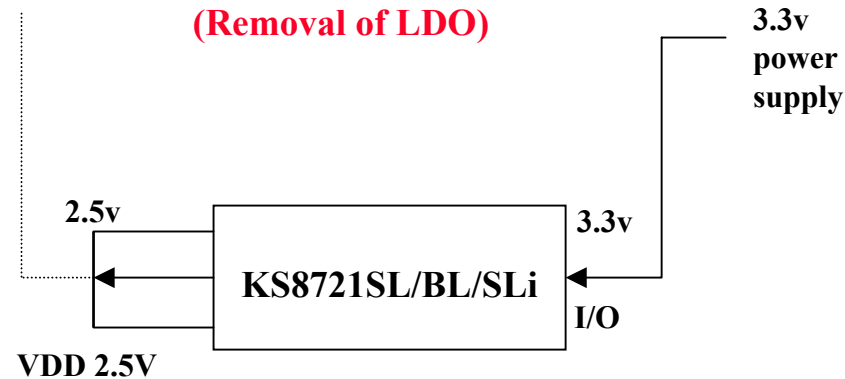


- ✓ Single Power Supply, 3.3V
- ✓ No Logistics issue for Multi-Sourced die stacking
- ✓ Proven Technology
- ✓ Only Micrel Owns the Total Solution

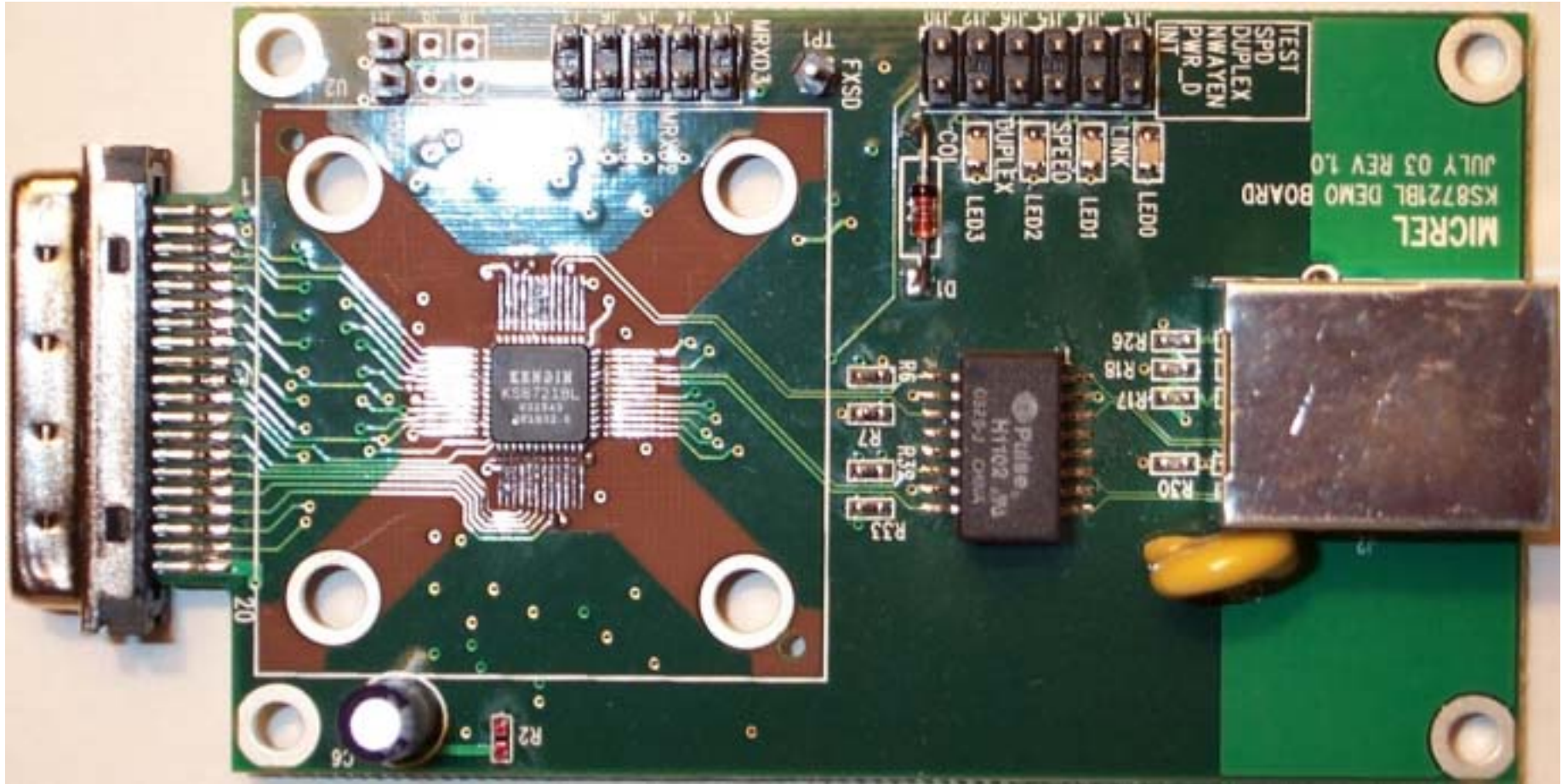
Drop-in replacement – SL/BL/SLi



(Removal of LDO)



KS8721BL Evaluation Board



KS8721B/BT/BL/SL Product schedule

	KS8721B/BT – 2.5V/3.3V	KS8721Bi – 2.5V/3.3V	KS8721BL – 3.3V only	KS8721SL – 3.3V only	KS8721SLi – 3.3V only
Package	48-SSOP 48-TQFP	48-SSOP	48-LQFP	48-SSOP	48-SSOP
Eng sample – internal	Now	Now	Now	Now	TBD
Customer Eval sample	Now	Now	Now w/ limited qty	Sept 03 w/ limited qty	TBD
Pilot Run Production	Now	Now	Sept 03	Oct 03	TBD
Volume Production	Now	Now	Nov 03	Dec 03	TBD
Data sheet	8/29/03 – Rev2.2	8/29/03 – Rev2.2	9/2/03 – preliminary	9/2/03 – preliminary	TBD
Demo board	Now	Now	Now w/ limited qty	Nov 03	TBD
Ref Schematic	Now	Now	Now	Oct 03	TBD