

Q8 Push Lock Connector

Product Data Sheet

Amphenol LTW New Push-Lock Connector Series - Q8

Amphenol LTW introduces its brand new Q8 push-lock connector series for your space-constraint applications. With audible feedback and guided key design, this Q8 Series ensures error-proof and easy assembly for blind mating. A simple quick and safe release to save you time and cost, with just a small pull force.

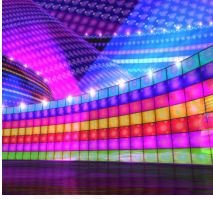


Designed to meet IP68 waterproof protection and rated to UL-F1 UV resistance, these connectors are fit for use to either indoor or outdoor wet locations and are UL2238 and UL50e compliant to achieve highest safety standard.

The Q8 connector series is rated up to 5A for both Low Voltage Power and Data transmissions. The product range includes 2 to 6 contact configuration and Hybrid (Power + Data) solution to suit your variable requirements.



Applications:



LED Lighting



Communication Systems



IP CCTV & Security



Industrial Automation



Electric Vehicle

Specification:

General Characteristics		Technical Characteristics – Mechanical	
Current Rating	2A, 5A, 5A+2A	Mating Force	5 kgf Max.
Voltage Rating	2A: 60 Vdc	Unmating Force	3 kgf Max.
	5A: 277 Vac / Vdc	Tensile strength	10 kgf Min.
	5A+2A: 5A, 277 Vac & 2A, 60 Vdc		
Durability	2,000 cycles	Material Specification	
Waterproof Rating	IP 68 (Mated, 1M/24 Hours)	Housing	High-temperature thermoplastic
Operating Temperature	-30 ~ +105°C (UL Rating : -30 ~ +90°C)	Terminal	Copper Alloy, Gold Plated.
		Gasket & O-ring	Rubber
Technical Characteristics - Electrical		UV Resistant	f1 material
Contact Resistance	10 mΩ max.	Environmental Conditions and Performance	
Insulation Resistance	100 MΩ Min.	Salt Spray	• 500 hours
Safety Compliance	UL 2238 (Outdoor Use, UL 50e)		In Process

For more information, please contact:
Luc Kan | Sales & Marketing | Email: luc@ltw-tech.com

Amphenol LTW Technology Co., Ltd | 5F-3, No.51, Sec.4, Zhongyang Rd., Tucheng Dist., New Taipei City 23675, Taiwan
Telephone: +886-2-7741-6888 | Fax: +886-2-7741-6999 | <http://www.amphenolltw.com>



Innovation in Waterproof Solution

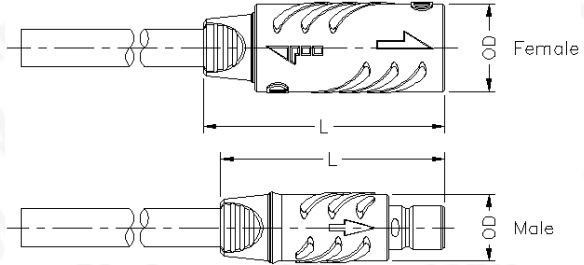
* Design and specifications are subject to change without notice.

Q8 Push Lock Connector

Physical Dimensions Data Group

Straight types

- Male / Female Contacts available
- UL Cable (21388)

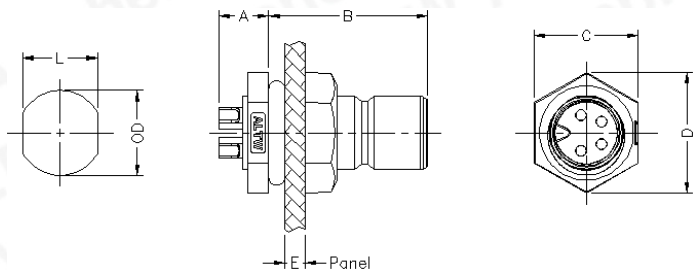


Dimension		L		OD	
Size	Type	Female	Male	Female	Male
M8	Push Lock	38.8	36.0	14.0	10.6

• UNIT: mm

Front Fastened

- Male Connector
- Male / Female Contacts available
- Circular Flange



Dimension		L	OD	A	B	C	D	E (Max.)
Size	Type							
M8	Straight	7.1	8.1	4.8	15.2	10.0	11.5	2.0

• UNIT: mm