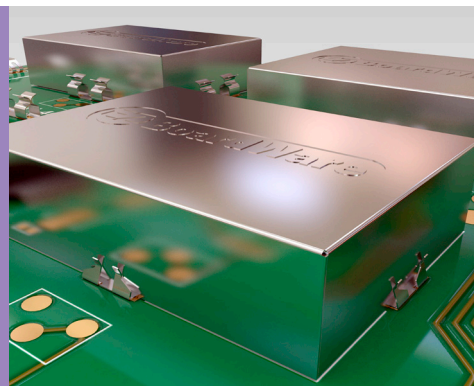


# RFI Shield Cans



## EMI/RFI Shielding

- ❖ Suitable for use with the Midi Shield clips shown on page 178 (S1711 and S2711 series).
- ❖ Provides excellent RFI and EMI protection to sensitive circuitry at the PCB level.
- ❖ Standard can sizes available from stock.

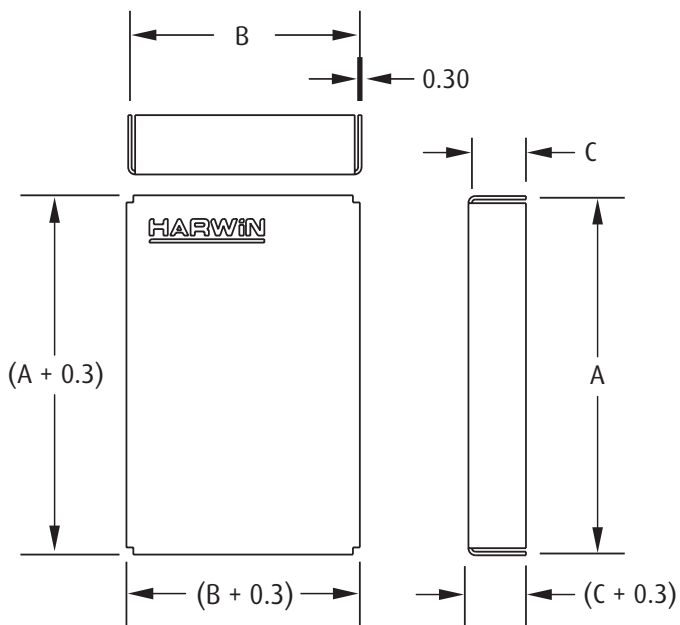


### Materials

Material: Nickel Silver  
Finish: Unplated

### Standard Sizes

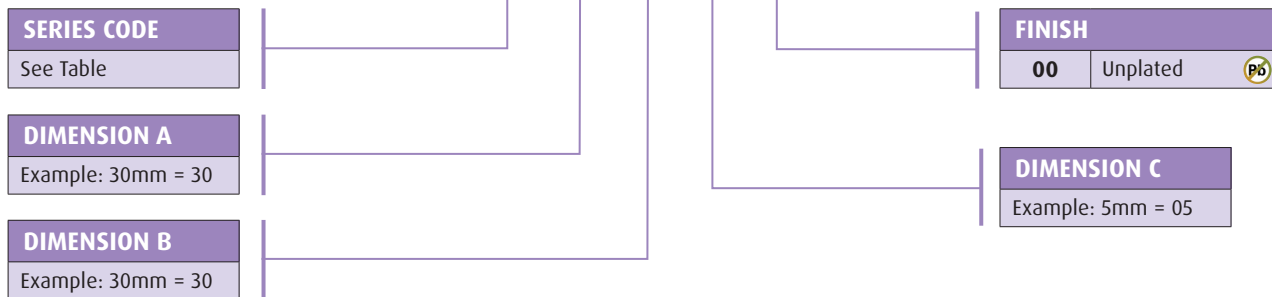
ORDER CODE	DIM A	DIM B	DIM C
S01-30200500	30mm	20mm	5mm
S01-30300500	30mm	30mm	5mm
S01-50250500	50mm	25mm	5mm



- ❖ Dimensions A and B are measured from the centre of the material thickness.
- ❖ Dimension C is measured from the bottom edge to the inside of the top face.

### HOW TO ORDER

**S01 XX XX XX 00**



All dimensions in mm.