

# Customer Information Sheet

DRAWING No.: S01-806005KIT

SHEET 2 OF 2

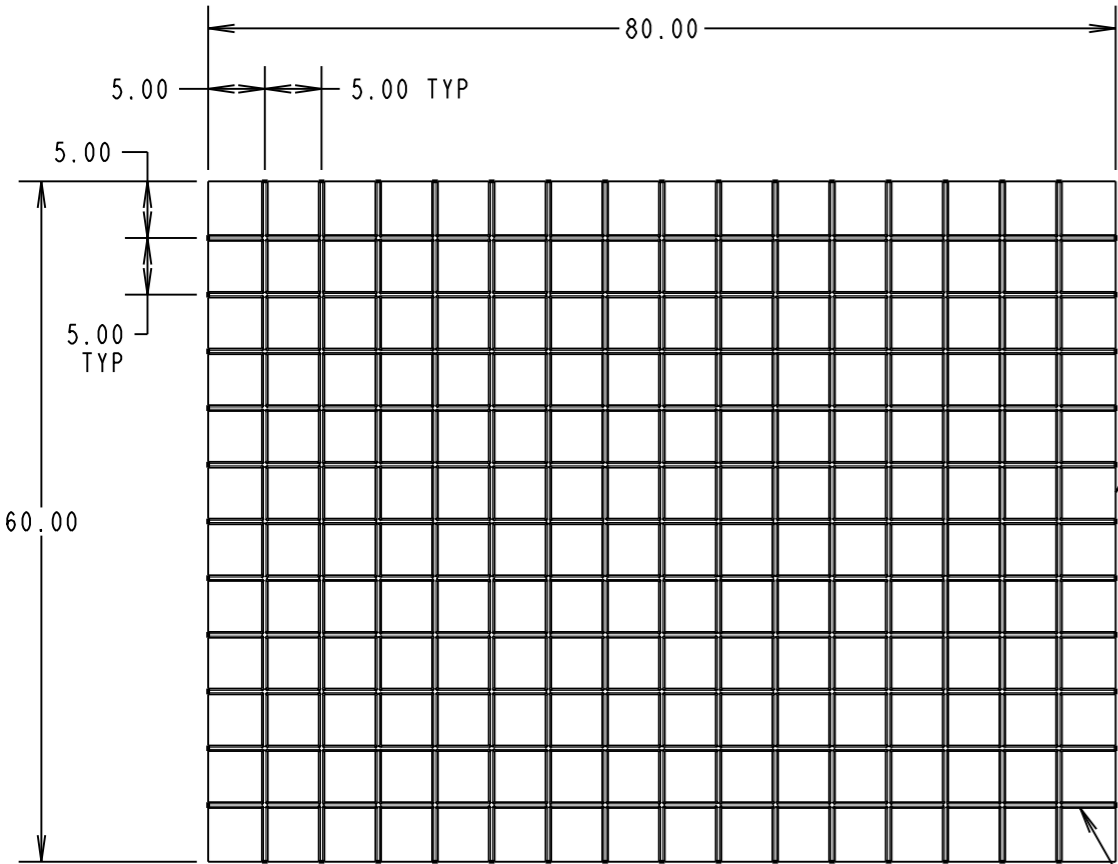
IF IN DOUBT - ASK

©

NOT TO SCALE

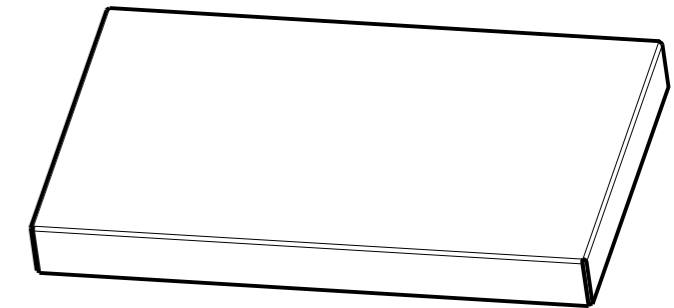
THIRD ANGLE PROJECTION

ALL DIMENSIONS IN mm

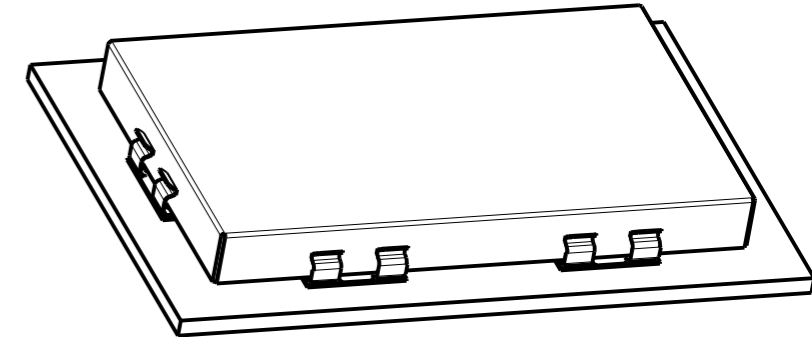


ORDER CODE:  
**S01-806005KIT**

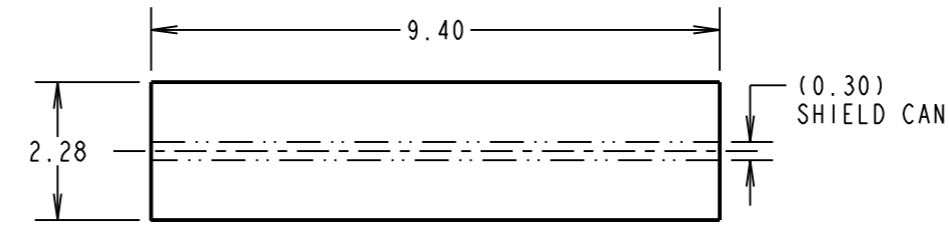
CAN SHEET LENGTH:  
CAN SHEET WIDTH:  
CAN ETCHING PITCH:



VIEW OF FOLDED CAN FOR ILLUSTRATION ONLY



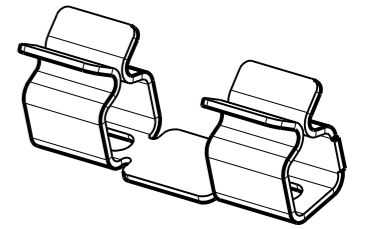
ETCHED CAN SHEET



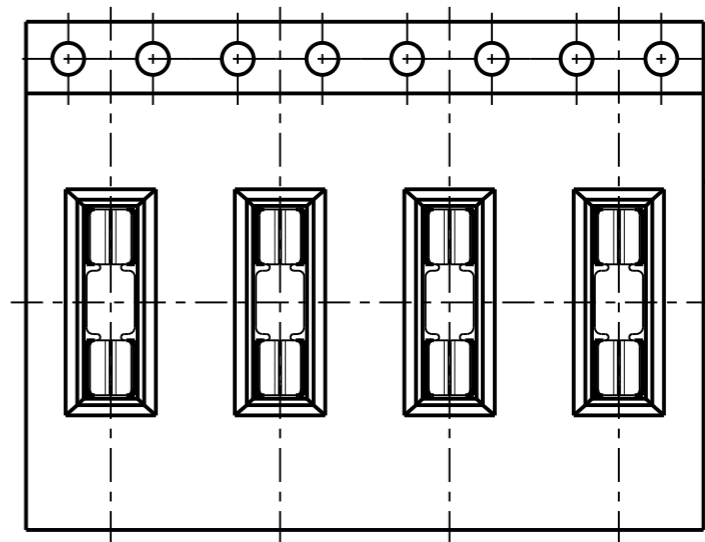
RECOMMENDED PAD LAYOUT FOR S1711-46R

1/2 ETCHED LINES FOR FOLDING

SHIELD CAN KIT INSTRUCTION SHEET



RFI SHIELD CLIPS



NICKEL SILVER, HALF HARD NS106, TO BS1653 0.30mm THICK (UNPLATED)

\*\*\* Please contact [Barbara.Maier@codico.com](mailto:Barbara.Maier@codico.com) to get more information! \*\*\*

- NOTES:
- S01-806005KIT IS COMPOSED OF:  
1 x Y0905-00: CLEAR HARWIN BOX,  
2 x S01-806005SHEET: ETCHED NICKEL SILVER CAN SHEETS,  
24 x S1711-46R: RFI SHIELD CLIPS IN STRIPS OF 12,  
1 x IS-39: SHIELD CAN KIT INSTRUCTION SHEET.
  - FOR COMPONENT DETAILS OF RFI SHIELD CLIP, SEE DRAWING S1711-46R.

**HARWIN**

www.harwin.com  
technical@harwin.com

THIS DRAWING AND ANY INFORMATION OR DESCRIPTIVE MATTER SET OUT HEREON ARE CONFIDENTIAL AND COPYRIGHT PROPERTY OF THE HARWIN GROUP AND MUST NOT BE DISCLOSED, LOANED, COPIED OR USED FOR MANUFACTURING, TENDERING OR FOR ANY OTHER PURPOSE WITHOUT THEIR WRITTEN PERMISSION.

TOLERANCES  
X. = ±1mm  
X.X = ±0.50mm  
X.XX = ±0.10mm  
X.XXX = ±0.01mm  
ANGLES = ±5°  
UNLESS STATED

MATERIAL: SEE ABOVE  
FINISH: SEE ABOVE  
S/AREA: mm<sup>2</sup>

TITLE: EZ-BOARDWARE SHIELD CAN AND SMT RFI SHIELD CLIP KIT  
DRAWING NUMBER: S01-806005KIT  
SHT 2 OF 2

SB	3	19.08.14	12554
NAME	ISS.	DATE	C/NOTE
APPROVED:		S.BENNETT	
CHECKED:		M.PLESTED	
DRAWN:		S.BENNETT	
CUSTOMER REF.:			
ASSEMBLY DRG:			